

Divisibility by 6

If a number is divisible by both 2 and 3, then it is divisible by 6.

Let's circle the numbers that are divisible by 6.

81

915

31

312

52

100

276

5

36

144

16

87

45

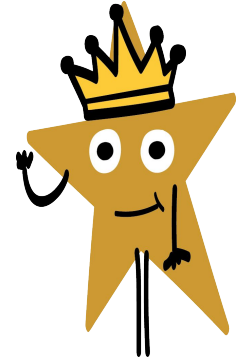
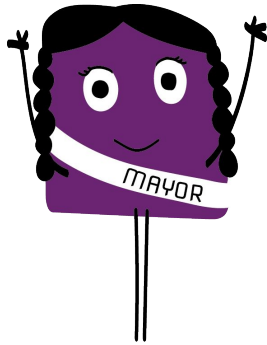
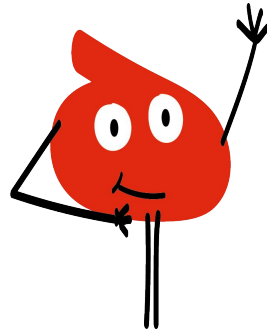
41

11

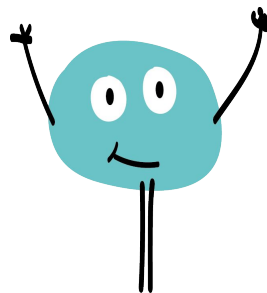
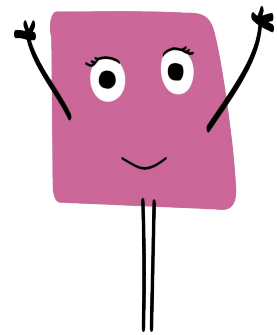
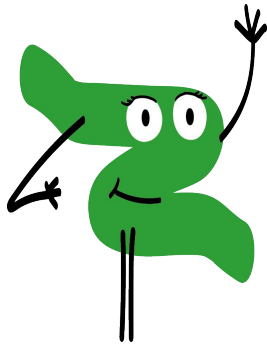
18

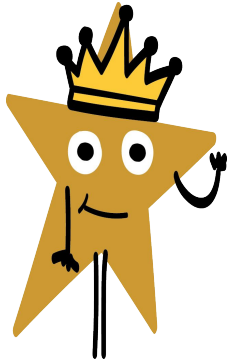
Reminder:

It's important to remember that just because a number is not divisible by a certain number, it doesn't mean that it can't be divided by that number at all. It just means that it cannot be divided equally by that number.



Solutions
Spoilers ahead!





Divisibility by 6

If a number is divisible by both 2 and 3, then it is divisible by 6.

Let's circle the numbers that are divisible by 6.

81

915

31

312

52

100

276

5

36

144

16

87

45

41

11

18

Reminder:

It's important to remember that just because a number is not divisible by a certain number, it doesn't mean that it can't be divided by that number at all. It just means that it cannot be divided equally by that number.