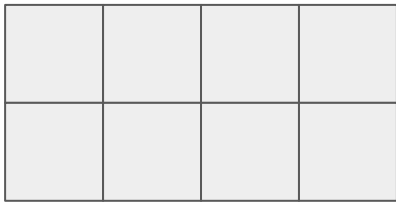


## Multiplication vs. Addition

Use what you've learned to find out how many tiles are in each shape.

Let's solve these questions:



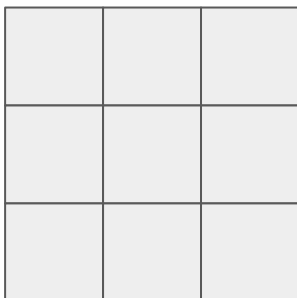
$$4 \times 2 = 8$$



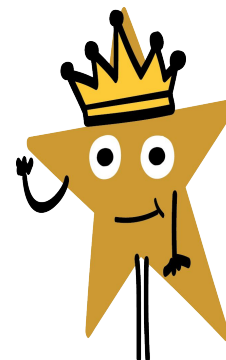
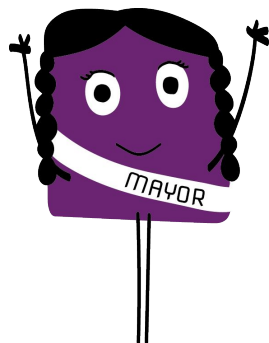
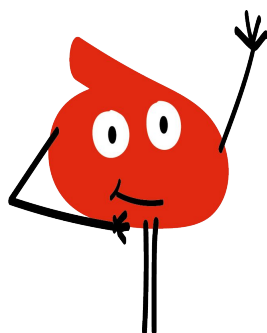
$$\underline{\quad} \times \underline{\quad} = \underline{\quad}$$



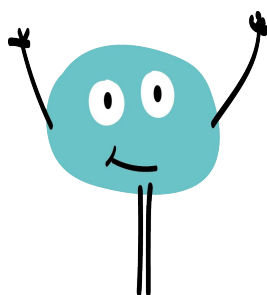
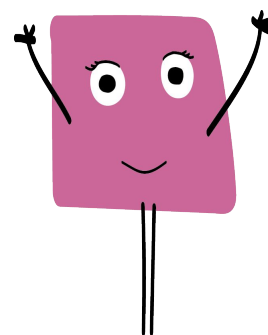
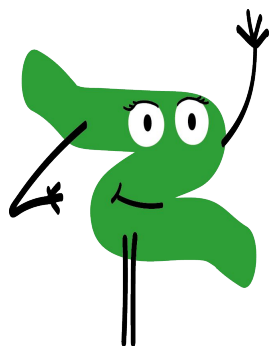
$$\underline{\quad} \times \underline{\quad} = \underline{\quad}$$

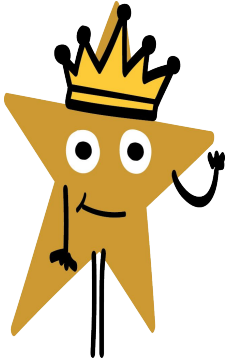


$$\underline{\quad} \times \underline{\quad} = \underline{\quad}$$



**Solutions**  
**Spoilers ahead!**

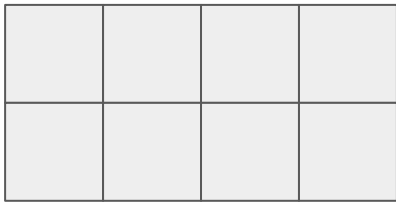




## Multiplication vs. Addition

Use what you've learned to find out how many tiles are in each shape.

Let's solve these questions:



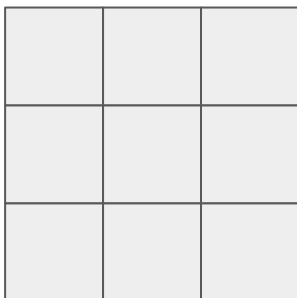
$$4 \times 2 = 8$$



$$6 \times 1 = 6$$



$$2 \times 3 = 6$$



$$3 \times 3 = 9$$