

Subtraction (1-20)

Let's take it up a notch!

Solve these questions:

$13 - 8 = 5$

$18 - 9 = \underline{\quad}$

$11 - 9 = \underline{\quad}$

$7 - 3 = \underline{\quad}$

$4 - 3 = \underline{\quad}$

$11 - 8 = \underline{\quad}$

$13 - 6 = \underline{\quad}$

$15 - 6 = \underline{\quad}$

$12 - 4 = \underline{\quad}$

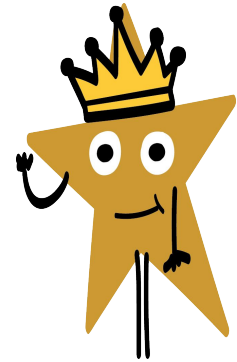
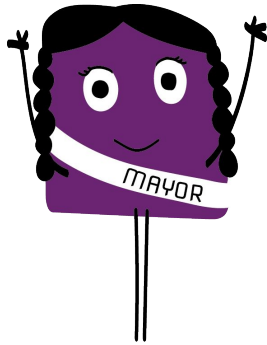
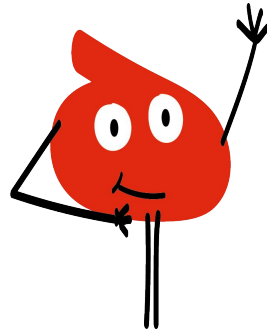
$19 - 5 = \underline{\quad}$

$15 - 2 = \underline{\quad}$

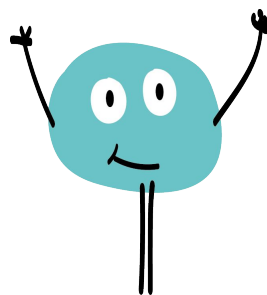
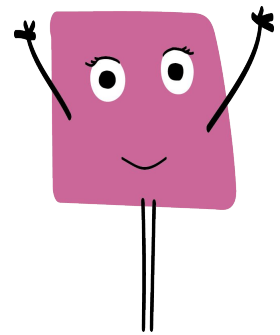
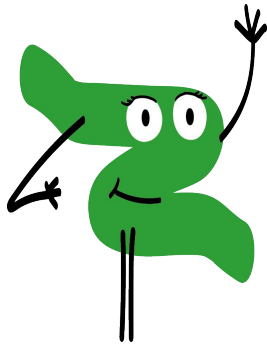
$14 - 3 = \underline{\quad}$

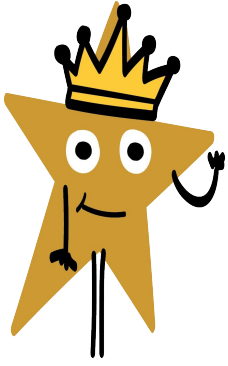
$10 - 2 = \underline{\quad}$

$17 - 8 = \underline{\quad}$



Solutions
Spoilers ahead!





Subtraction (1-20)

Let's take it up a notch!

Solve these questions:

$$13 - 8 = 5$$

$$11 - 9 = 2$$

$$4 - 3 = 1$$

$$13 - 6 = 7$$

$$12 - 4 = 8$$

$$15 - 2 = 13$$

$$10 - 2 = 8$$

$$18 - 9 = 9$$

$$7 - 3 = 4$$

$$11 - 8 = 3$$

$$15 - 6 = 9$$

$$19 - 5 = 14$$

$$14 - 3 = 11$$

$$17 - 8 = 9$$